

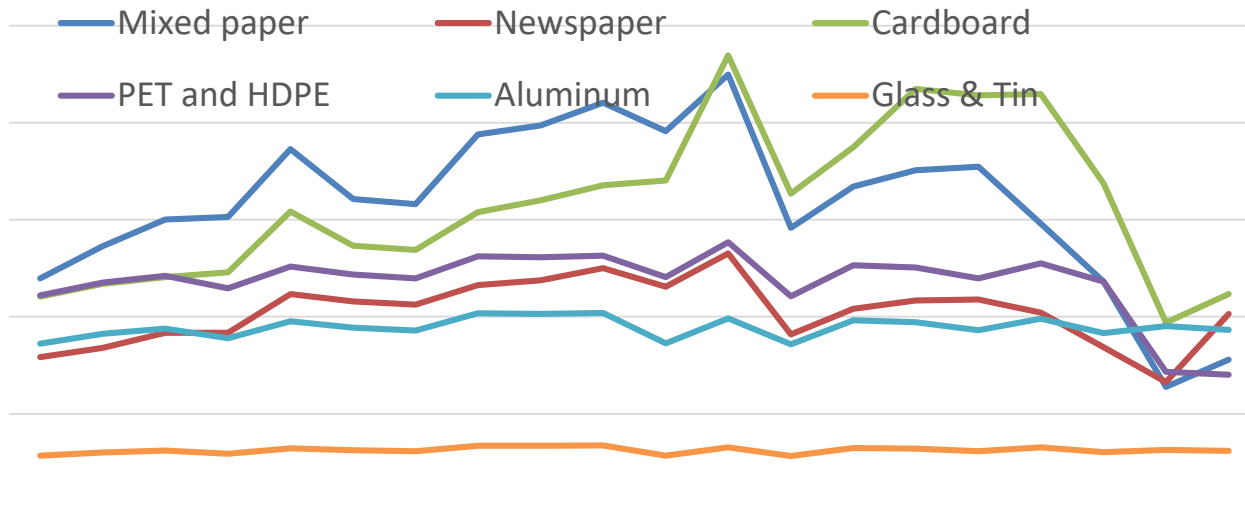
City Perspective on 2017 Recycling Markets

WSRA Fall Forum 12/6/17

**Hans Van Dusen
Contracts Manager**

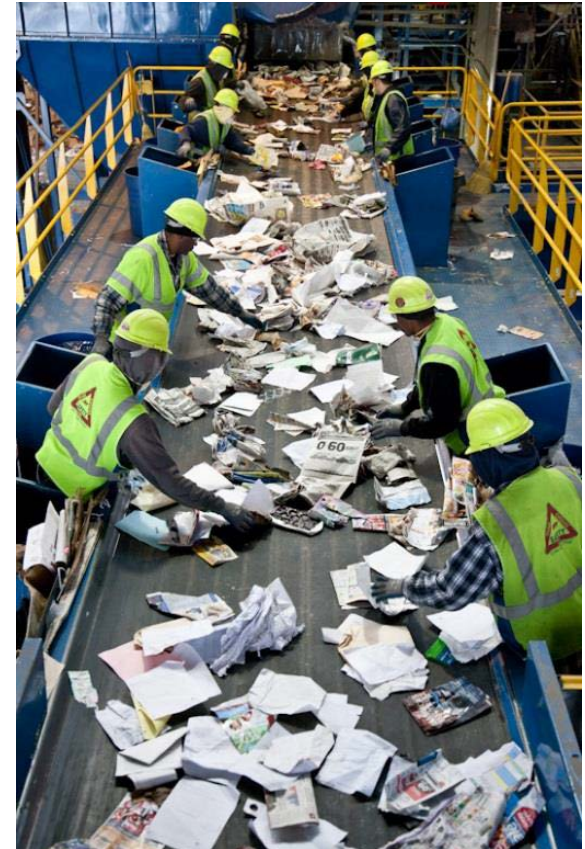
Seattle Perspective

1. Service Contract & Payments
2. Outreach & Customer Education
3. Domestic Market Support

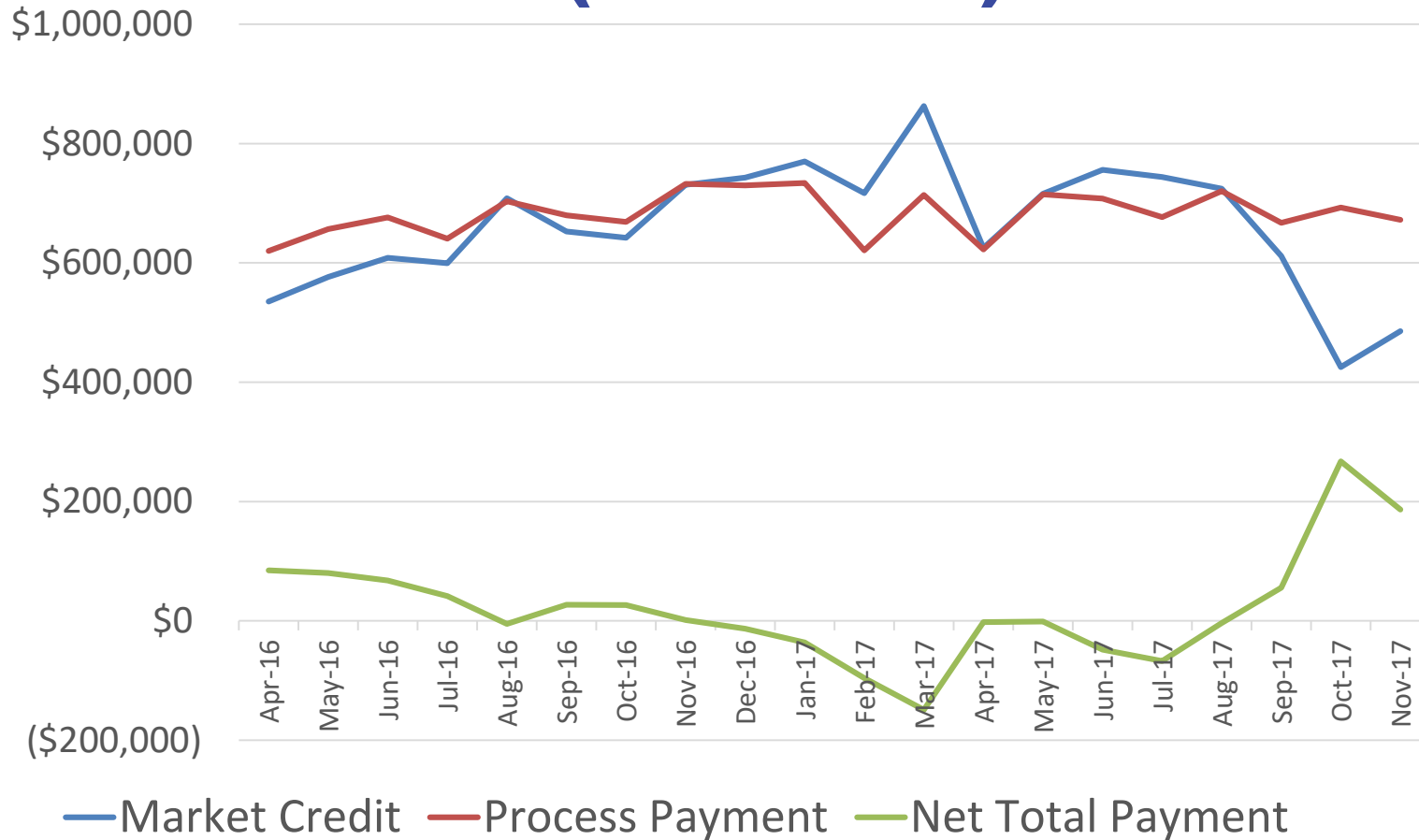


City Service Contract

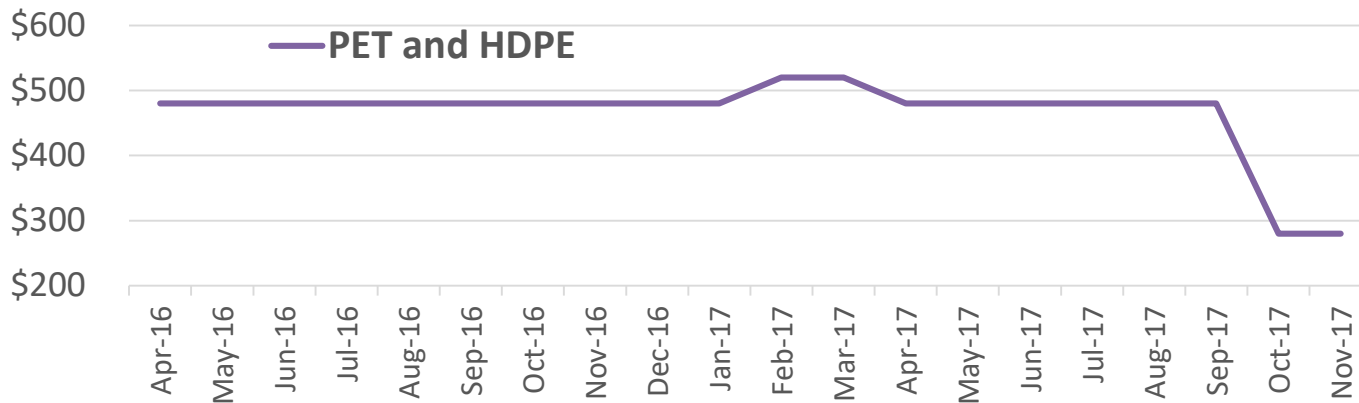
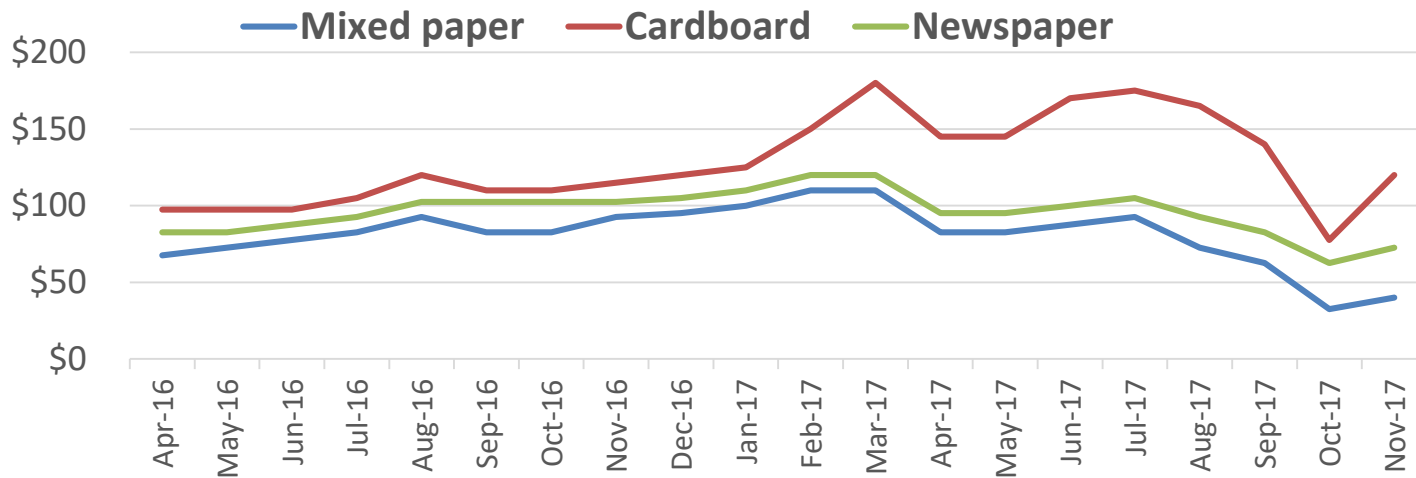
- A processing contract
- Recyclable materials
- Processing Standards – PET, HDPE, glass
- 100% market risk on 98% commodities
- Disposal prohibition



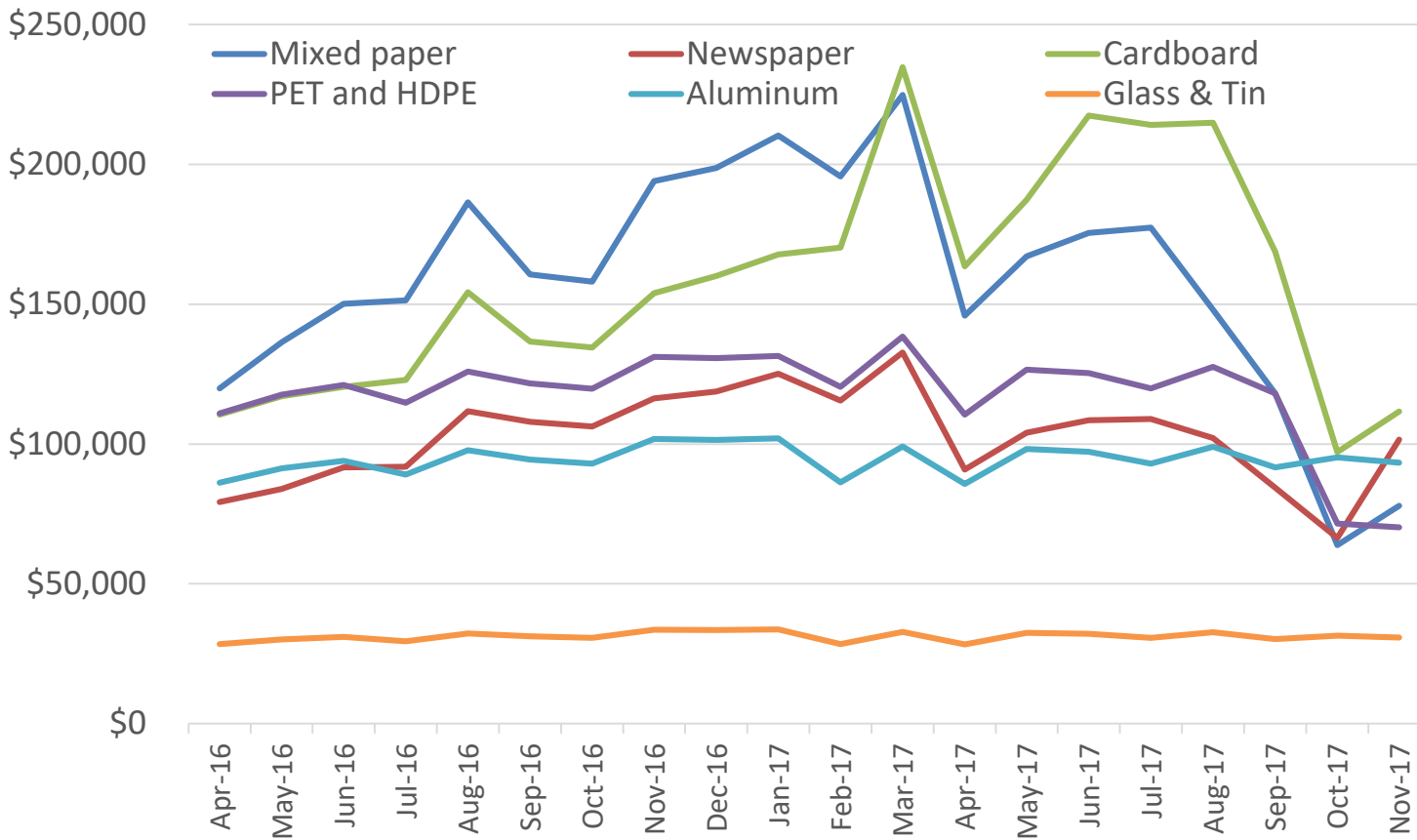
Processing Payments & Credits (\$/month)



Commodity Prices (\$/ton)



Commodity Values (\$/month)



Outreach & Customer Education

1. What's going on?

2. What's recyclable?

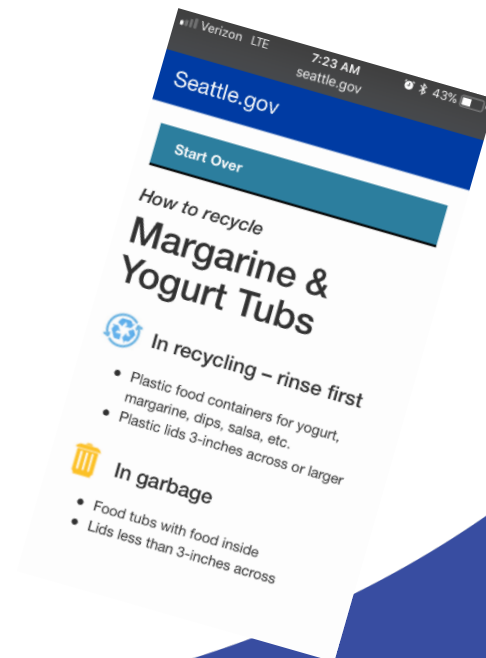
- Consistent – over time and boundaries
- Understandable – more than numbers
- No sudden changes
- Prevention – reduce single-use items



Outreach (cont'd)

3. What can we do? Less Contamination

- Seattle 6% in 2009 to 10% in 2014
- Higher multifamily
- Redouble our efforts



Domestic Markets Support

1. Investigate Regional Potential for Downstream Facilities

- Follow-up by SPU, KC Link up & others
- Commingled Recycling Group action item
- Plastics Recycling Facility (PRF)
- Secondary MRF

Domestic Markets (continued)

2. Some interest for regional facilities

- Conversations with Merlin (BC), Denton Plastics (OR), Titus Services (City of LA), and others
- Material flow commitments are a key driver
- Merlin in BC expressed near-term capacity for mixed plastic

3. Next steps

- Additional follow-up and meetings 1Q18
- Looking for realistic next steps in NW
- Regional involvement later in year

Questions?